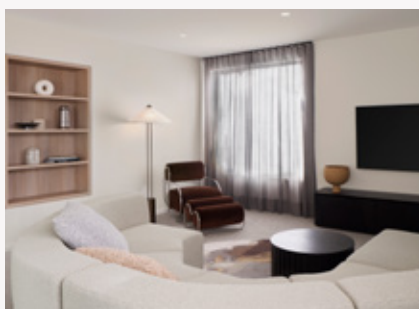


ON DISPLAY

Montreal 43



Boutique luxury hotel style at home

Featuring a modern gabled Highland façade, contemporary cladding, tall windows and undulating pressed clay brick, the Montreal 43 has a sleek yet understated presence outside and in.

Inside, the home feels intimate, despite having a generous floorplan and has all the modern luxury finishes and fixtures of a boutique hotel from custom dark joinery to the ensuite bathroom tiles and tapware and wall sconces. In the main spaces and kitchen, dark cabinetry, and stone finishes with a lowered ceiling to create an intimate dining experience.

On display in Bankside Estate, 3 Ember Crescent, Rowville.

Montreal 43

Highland facade.

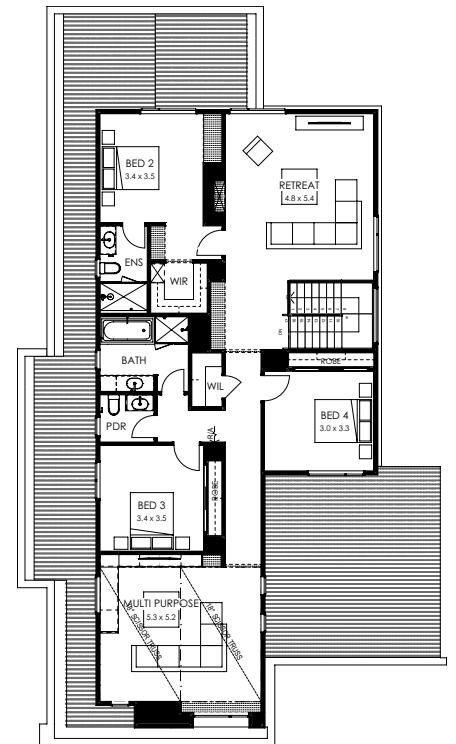
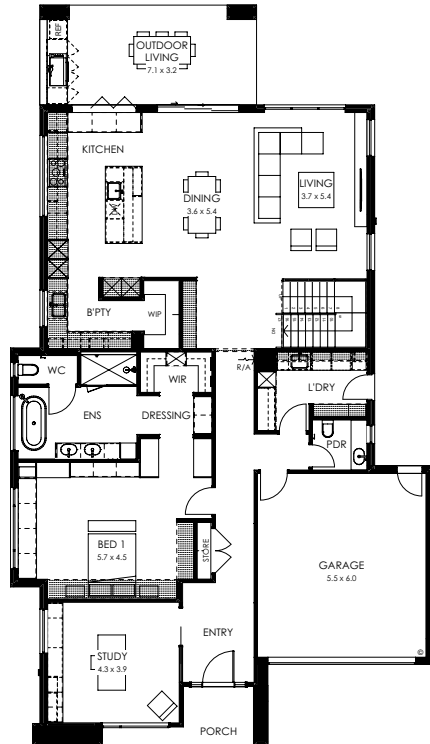
Home specifications.

Total area	413.11m ² 44.45sq
Width	13.12m
Length	24.12m
Fits lot width	15.24m



Home design specifications.

- Highland façade
- 2590mm ceiling to first floor
- 2740mm ceiling to ground floor
- Square set ceiling throughout the home
- Porcelain stone benchtops
- Floor to ceiling cabinetry & functional joinery throughout
- Large butler's pantry
- Laundry with mud room
- Sculptural modern staircase
- Feature lighting
- Stunning interior colour scheme selected by our Senior Interior Designer



Home style specifications.

Kitchen

Benchtop	Vasari - Super White
Overhead cabinetry	Polytec Black Ply - Woodmat
Base cabinetry	Polytec Black Ply - Woodmat
Splashback	Vasari - Super White

Living

Carpet	Carpet Call Applecross - Fieldstone. 100% wool, textured loop pile
Main floor timber	Bora Bora Oak Paint
Paint	Dulux Rottnest Island

Ensuite

Benchtop	Vasari - Super White
Base cabinetry	Polytec Black Ply - Woodmat
Main floor tile	Surfaces by Hynes 300x600 - Venetian - Gris
Main wall tile	Surfaces by Hynes 300x600 - Venetian - Gris

Main Bathroom

Benchtop	Caesarstone Fresh Concrete
Base cabinetry	Polytec Bottega Oak - Woodmat
Main floor tile	Surfaces by Hynes 300x600 - Venetian - Fog
Main wall tile	Surfaces by Hynes 300x600 - Venetian - Fog

Exterior

Main Façade Render	Colorbond Monument Port
Cladding	Colorbond Monument

Scan the code to learn more about the Montreal 43.



APPLY
STICKER
HERE

Disclaimer ©2023, all plans are protected by copyright and are owned by ABN Group (VIC) Pty Ltd. Plans are based on a modern facade. Images used in this brochure are for illustrative purposes only and may depict fixtures, finishes, features, furnishings and landscaping not included in standard pricing or supplied by Boutique Homes including, but not limited to, flooring, overhead cabinetry, 900mm wide appliances, 2550mm high ceilings, planter boxes and fences. For more information on the pricing and specification of these homes please contact one of our New Homes Consultants. Boutique Homes may at its direction determine how long it wants to offer the products and pricing set out in this brochure. Boutique Homes is entitled to vary all its products and pricing at its discretion at any time. See boutiquehomes.com.au for further details. All information contained within this brochure was accurate at time of printing on July 2024. BH0065