

ON DISPLAY

# Barcelona 32



## Mid-century inspired design

The Barcelona offers stylish design and flexible functionality for any block size. With huge windows and high ceilings, the home is naturally bright and inviting. The master bedroom near the entrance serves as a tranquil retreat with a walk-in robe, ensuite with double vanity, large shower, and separate WC.

The kitchen and living areas radiate warmth, featuring a butler's pantry, wraparound bench, island bench, and an outdoor living area sheltered by the roofline for all-weather enjoyment.

On display at 7 Blackwattle Drive, Armstrong Creek

# Barcelona 32

## Mason facade.

### Home specifications.

Total area	297.85 <sup>2</sup>	32.13sqs
Width	14.51m	
Length	23.75m	
Fits lot width	16.00m	



### Home design specifications.

- Home design specifications.
- Mason facade
- Dropped feature ceiling and wrap around design to kitchen
- Fireplace with functional built in joinery
- Large feature windows
- Ensuite double vanity to master bedroom

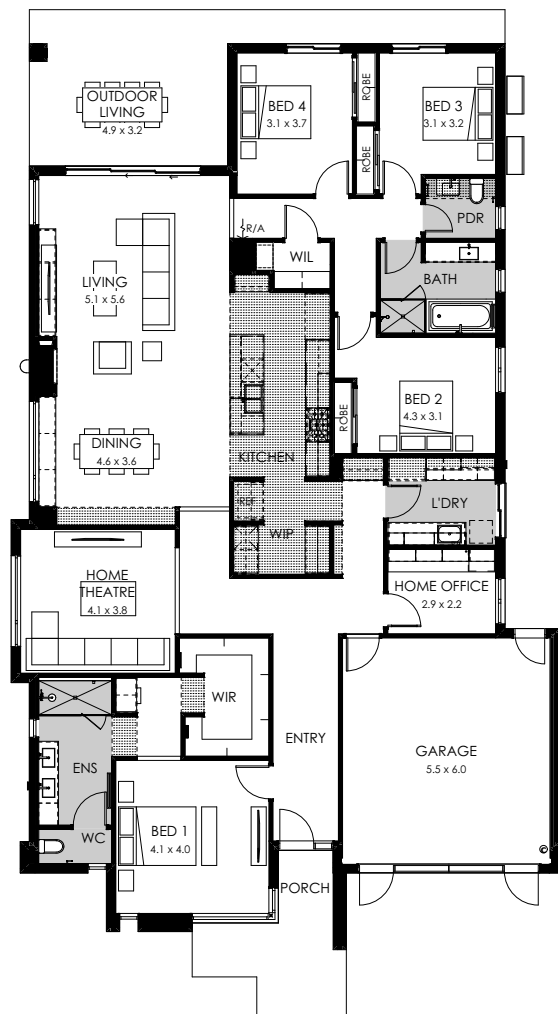
### Home style specifications.

#### Kitchen

Benchtop	Caeserstone - Raw Concrete
Overhead cabinetry	Polytec - Forge - Smooth
Base cabinetry	Polytec - Cinder - Woodmatt
Splashback	Omnistone Charcoal Microtec

#### Living

Carpet	Carpet Call - Meadow Gait - 30 Mortar
Main floor timber	Surfaces by Hynes - Hamptons Ultra - Dune
Paint	Dulux - Pipe Clay



#### Ensuite

Benchtop	Caesarstone - Raw Concrete
Base cabinetry	Polytec - Cinder - Woodmatt
Main floor tile	Surfaces by Hynes - 300x600 - Olympia Charcoal - Matt
Main wall tile	Surfaces by Hynes - 300x600 - Olympia Charcoal - Matt

#### Main Bathroom

Benchtop	Caesarstone - Raw Concrete
Base cabinetry	Polytec - Forge - Smooth
Main floor tile	Surfaces by Hynes - 300x600 - Olympia Charcoal - Mat
Main wall tile	Surfaces by Hynes - 300x600 - Olympia Charcoal - Matt

#### Exterior

Main Façade Render	Dulux - Dulux Acratex
Cladding	Dulux - Black

Scan the code to learn more about the Barcelona 32.



Disclaimer ©2023, all plans are protected by copyright and are owned by ABN Group (VIC) Pty Ltd. Plans are based on a modern facade. Images used in this brochure are for illustrative purposes only and may depict fixtures, finishes, features, furnishings and landscaping not included in standard pricing or supplied by Boutique Homes including, but not limited to, flooring, overhead cabinetry, 900mm wide appliances, 2550mm high ceilings, planter boxes and fences. For more information on the pricing and specification of these homes please contact one of our New Homes Consultants. Boutique Homes may at its direction determine how long it wants to offer the products and pricing set out this brochure. Boutique Homes is entitled to vary all its products and pricing at its discretion at any time. See boutiquehomes.com.au for further details. All information contained within this brochure was accurate at time of printing on October 2024. BH0065

APPLY  
STICKER  
HERE