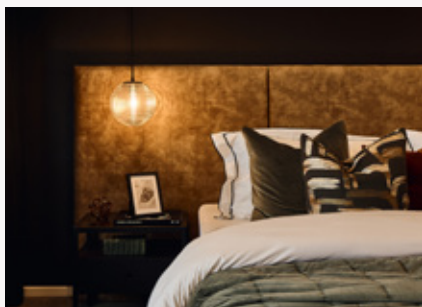


ON DISPLAY

Seville 28



Vintage elegance in modern spaces

Infusing beloved styles with a fresh, modern twist isn't a new phenomenon in interior design. But few combine time-honoured elegance with the sophistication of contemporary quite like reinvented classicism.

Known for its warm, moody tones and mature feel, this nostalgic style combines classic interiors with contemporary art and furniture.

On display in Botanical estate. 2 Porcini Parade, Mickleham.

Seville 28

Tribeca facade.

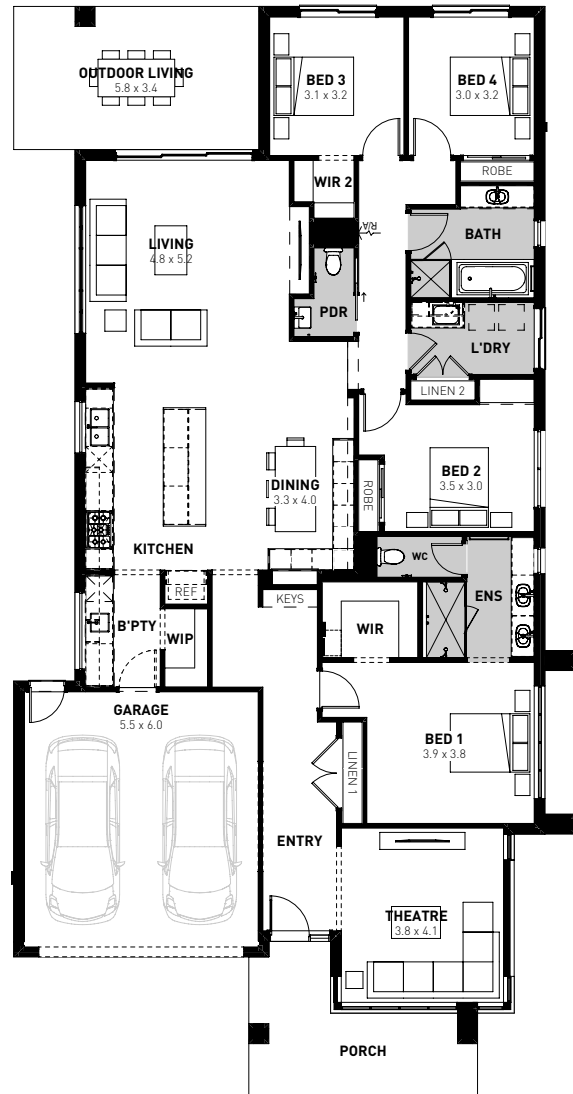
Home specifications.

Total area	262.98m ² 28sqs
Width	12.47m
Length	24.23m
Fits lot width	14m



Home design specifications.

- Tribeca façade
- Square set ceiling throughout the home
- 2060mm ceiling
- Outdoor living space
- Butler's pantry with overhead and base cabinetry
- New Austral brick in Overland Pristine Bruny
- Built in bench seat to dining
- 20mm benchtop to kitchen, butler's pantry, laundry, ensuite and main bathroom
- ILVE 900mm cooking appliances
- Caroma Contura brass tapware
- Interior colour scheme selected by our Senior Interior Designer



Home style specifications.

Kitchen

Benchtop	Caesarstone Arabetto
Overhead cabinetry	Polytec Gossamer White - Smooth Thermolaminate
Base cabinetry	Polytec Bottega Oak - Woodmatt
Splashback	Subway Touch - Gun Metal

Living

Carpet	Carpet Call Kovatech Deluxe - 52 Dolphin. 100% Kovatech Comfeel, super soft cut pile
Main floor tile	600x600 - Grampians Pumice - Matt
Paint	Dulux Hammer Grey

Ensuite

Benchtop	Caesarstone Alpine Mist
Base cabinetry	Polytec Bottega Oak - Woodmatt
Main floor tile	Surfaces by Hynes 600x600 - Grampians Pumice - Matt
Main wall tile	Surfaces by Hynes 300x600 - Grampians Pumice - Matt

Main Bathroom

Benchtop	Caesarstone Alpine Mist
Base cabinetry	Polytec Bottega Oak - Woodmatt
Main floor tile	Surfaces by Hynes 600x600 - Grampians Pumice - Matt
Main wall tile	Surfaces by Hynes 300x600 - Grampians Pumice - Matt

Exterior

Main Façade	Render Dulux Grey Port
Cladding	Intergrain Natural Stain - Ebony

Scan the code to learn more about the Seville 28.



This display home is compliant with the National Construction Code 2019 and does not reflect items that apply to all new homes in line with the National Construction Code 2022, such as Livable Housing Design and 7-star energy efficiency requirements. Please contact your New Homes Consultant for further information. Disclaimer ©2023, all plans are protected by copyright and are owned by ABN Group (VIC) Pty Ltd. Plans are based on a modern facade. Images used in this brochure are for illustrative purposes only and may depict fixtures, finishes, features, furnishings and landscaping not included in standard pricing or supplied by Boutique Homes including, but not limited to, flooring, overhead cabinetry, 900mm wide appliances, 2550mm high ceilings, planter boxes and fences. For more information on the pricing and specification of these homes please contact one of our New Homes Consultants. Boutique Homes may at its direction determine how long it wants to offer the products and pricing set out this brochure. Boutique Homes is entitled to vary all its products and pricing at its discretion at any time. See boutiquehomes.com.au for further details. All information contained within this brochure was accurate at time of printing on July 2024. BH0065

APPLY
STICKER
HERE