



# Barwon 20

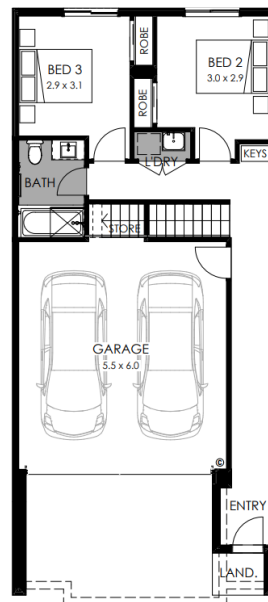
Fixed Price **\$724,900**

Lot 4 Hargreaves Street, Portarlington Panorama

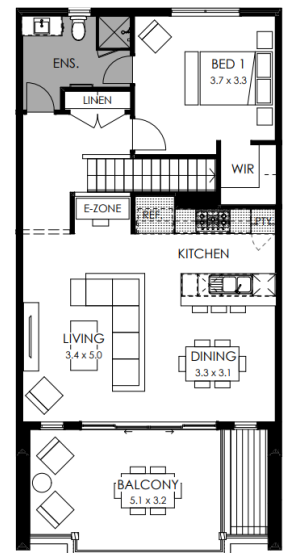
Land size: 147m<sup>2</sup>



- Architectural Bayview façade
- Heating & Cooling
- Double Glazing
- Exposed aggregate outdoor paving
- Crystalline silica-free benchtops
- 2550mm high ceilings
- LED lights
- Roller blinds
- 900mm wide ILVE appliances
- Soft closers to all kitchen, laundry and vanity drawers & doors
- 25 Year Structural Guarantee
- 12 Month Maintenance



Ground floor



First floor

Call Boutique Homes 9008 7470

Or email [enquiries@boutiquehomes.com.au](mailto:enquiries@boutiquehomes.com.au)

[boutiquehomes.com.au](http://boutiquehomes.com.au)

**boutique**  
homes

Image used is an artist impression for illustrative purposes only and may show decorative items not included in the price. Further terms and conditions apply to this offer including with respect to the price, for the full terms and conditions please visit <http://www.boutiquehomes.com.au/disclaimer>.