



# Eden 18

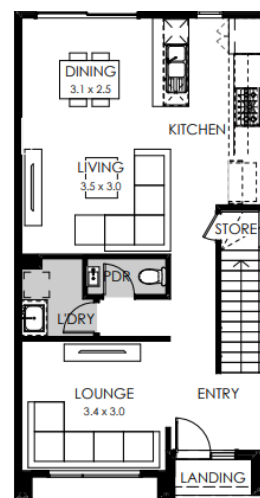
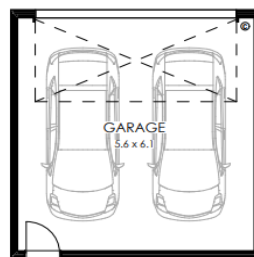
Fixed Price **\$614,900**

Lot 1918 Tomatina Way - Berwick

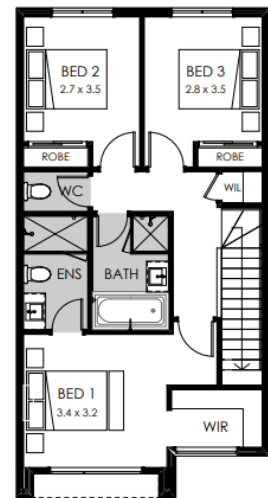
Land size: 156m<sup>2</sup>



- Architectural Aspen façade
- Heating & Cooling
- Double Glazing
- Exposed aggregate outdoor paving
- Crystalline Sillica-free benchtops
- 2550mm high ceilings
- LED lights
- Roller blinds
- 900mm wide ILVE appliances
- Soft closers to all kitchen, laundry and vanity drawers & doors
- 25 Year Structural Guarantee
- 12 Month Maintenance



Ground floor



First floor

Call Boutique Homes 9008 7470

Or email [enquiries@boutiquehomes.com.au](mailto:enquiries@boutiquehomes.com.au)

[boutiquehomes.com.au](https://www.boutiquehomes.com.au)

**boutique**  
homes

Image used is an artist impression for illustrative purposes only and may show decorative items not included in the price. Please ask your New Home Consultant for detailed home design specific drawings, full extent of inclusions, features, pricing, and specifications of your preferred home design and/or façade. Further terms and conditions apply to this offer including with respect to the price, for the full terms and conditions please visit <https://www.boutiquehomes.com.au/terms-conditions/>