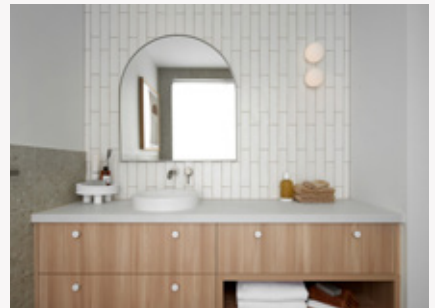


ON DISPLAY

Parkville 31



Muted Modern Mediterranean

Resort living at home, this scheme transports you to Byron Bay, imagine a coastal soft summer breeze flowing through the open light-filled spaces. Light, fresh and airy. Soft organic curves and silhouettes. Light, sheers and soft textures with interest created in the layering of bouclé, terrazzo, curved profiles and light timbers. Modern, handmade-feel light-fittings create considered details. Subdued colours and patterns throughout, a subtle nod to the boho & retro 70's emerge. The outdoor merges with the indoor in this beautiful contemporary home, large glazing creates connectivity, a grand alfresco and extended paved seating area combined with pizza oven makes this the ideal area for summertime entertaining.

On display at Mt Atkinson Estate, 25 Sierra Street, Truganina.

MT. ATKINSON

Parkville 31

Arc facade.

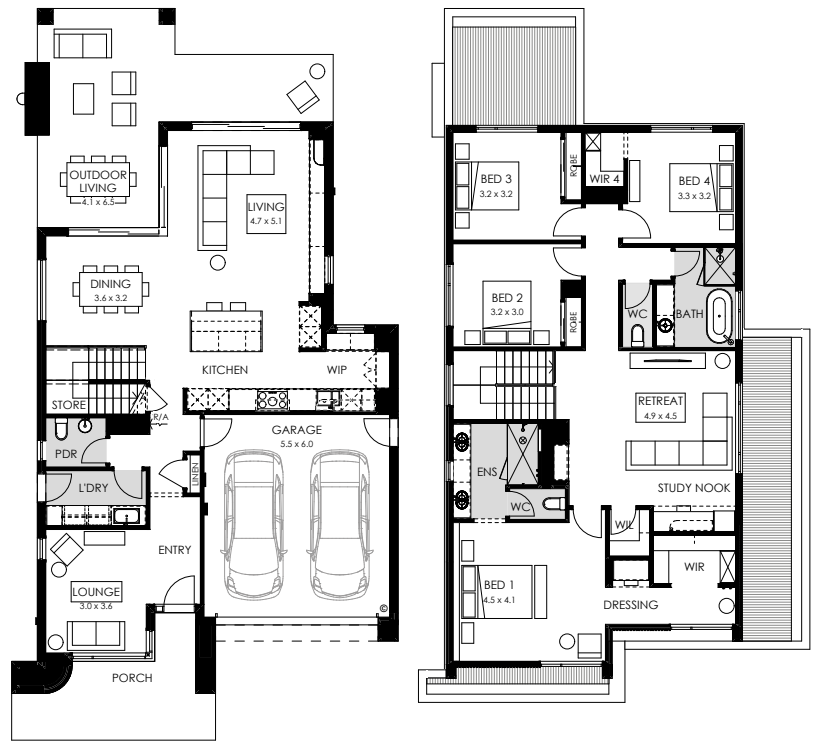
Home specifications.

Total area	306.20m ²
Width	11.43m
Length	20.26m
Fits lot width	12.5m
Fits lot length	25m



Home design specifications.

- Architectural Arc façade
- Square set ceiling throughout the home
- 2740mm ceiling height to the ground floor and 2590mm to first floor
- Grand outdoor living option
- ILVE suite of cooking appliances
- Butler's pantry with overhead and base cabinetry
- E-zone with built in cabinetry
- 40mm Caesarstone benchtop to kitchen, butler's pantry, laundry, ensuite and main bathroom
- Mosaic feature wall tiling to bedroom 1 ensuite
- 2438mm x 3228mm double glazed aluminium stacker door
- Curved joinery features
- Stunning interior colour scheme selected by our Interior Designer



Ground Floor

First Floor

Home style specifications.

Kitchen

Benchtop	Caesarstone Cloudburst Concrete
Splashback	White Wave Matt 67mm x 280mm
Overhead Cabinetry	Polytec Plantation Ash - Woodmatt
Base Cabinetry	Blossom White - Smooth Thermolaminate

Living

Carpet	Carpet Call Meadow Gait - 15 Cascade Mist. 100% Wool Loop Pile
Main floor tiles	Surfaces by Hynes 600x600 - Venetian - Bone
Paint	Dulux Whisper White

Ensuite

Benchtop	Caesarstone Cloudburst Concrete
Base cabinetry	Polytec Castel - Legato
Floor Main Tile	Surfaces by Hynes 300x600 - Venetian - Bone
Wall Tile	Surfaces by Hynes 300x600 - Venetian - Bone

Main Bathroom

Benchtop	Caesarstone Cloudburst Concrete
Base cabinetry	Polytec Plantation Ash - Woodmatt
Floor Main Tile	Surfaces by Hynes 300x600 - Venetian - Bone
Wall tile	Surfaces by Hynes 300x600 - Venetian - Bone

Exterior

Main Facade Render	Dulux Colorbond Surfsmist
Cladding	Knotwood Aluminium 40mm battens / Nordic Oak Matte

Discover the difference
BoutiqueHomes.com.au

Disclaimer ©2023, all plans are protected by copyright and are owned by ABN Group (VIC) Pty Ltd. Plans are based on a modern facade. Images used in this brochure are for illustrative purposes only and may depict fixtures, finishes, features, furnishings and landscaping not included in standard pricing or supplied by Boutique Homes including, but not limited to, flooring, overhead cabinetry, 900mm wide appliances, 2550mm high ceilings, planter boxes and fences. For more information on the pricing and specification of these homes please contact one of our New Homes Consultants. Boutique Homes may at its direction determine how long it wants to offer the products and pricing set out this brochure. Boutique Homes is entitled to vary all its products and pricing at its discretion at any time. See boutiquehomes.com.au for further details. All information contained within this brochure was accurate at time of printing on DECEMBER 2023. BH0065