



Capel 16

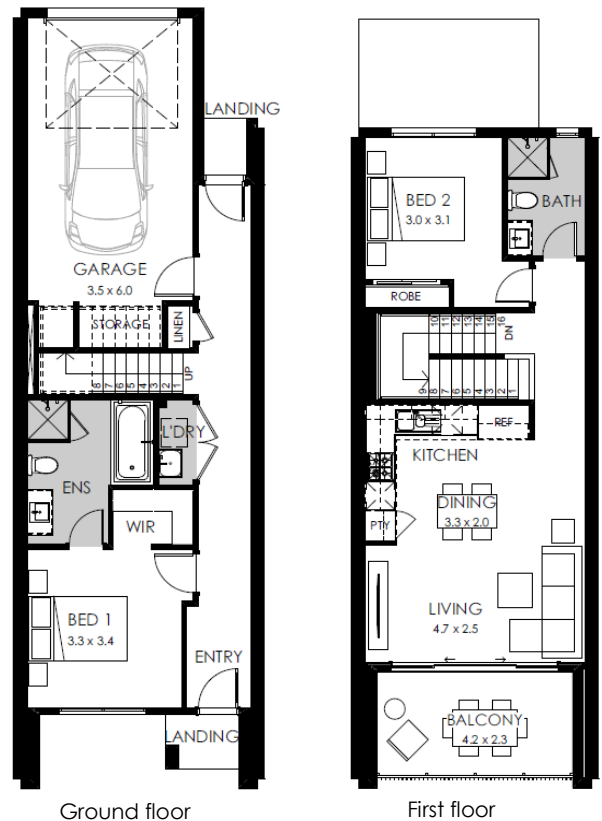
Fixed Price **\$462,900**

Lot 30831 Messara Walk, Mt Atkinson Estate - Truganina

Land size: 96m2



- Architectural Aspen façade
- Heating & Cooling
- Double Glazing
- Exposed aggregate outdoor paving
- Crystalline silica-free benchtops
- 2550mm high ceilings
- LED lights
- Roller blinds
- 600mm wide ILVE appliances
- Soft closers to all kitchen, laundry and vanity drawers & doors
- 25 Year Structural Guarantee
- 12 Month Maintenance



Call Boutique Homes 9008 7470
 Or email enquiries@boutiquehomes.com.au
boutiquehomes.com.au



Image used is an artist impression for illustrative purposes only and may show decorative items not included in the price. Further terms and conditions apply to this offer including with respect to the price, for the full terms and conditions please visit <http://www.boutiquehomes.com.au/disclaimer>.