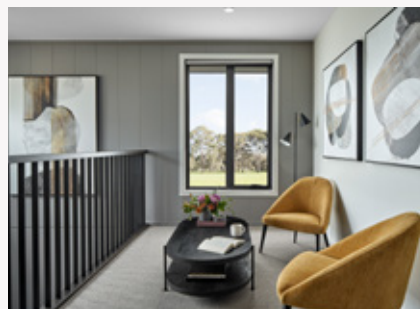


ON DISPLAY

# Mayfair 43



## Modern, Moody & Mature

Celebrating sleek and contemporary lines with a modern, mature and opulent interior style, the 43 square floorplan carries the sophistication of the Mode façade through to the interior style of the home with a monochromatic colour palette with pops of mustard.



On display at 5 Aintree Boulevard, Aintree

# Mayfair 43 Mode facade.

## Home specifications.

Total area	418.82 m <sup>2</sup>
Width	12.8
Length	22.91
Fits lot width	14m



## Home design specifications.

- Architectural Mode façade
- Staircase with wrought iron balustrade
- Brivis refrigerated cooling to both floors
- Hydronic heating
- Jetmaster fireplace
- 900mm wide ILVE appliances
- Caesarstone benchtops to kitchen and bathrooms
- Integrated outdoor living area with stacker entertainer doors
- Square set cornice throughout
- 2340mm high internal doors
- Twin vanity and double shower to ensuite

## Home style specifications.

### Kitchen

Benchtop	Caesarstone Empira White 5151
Overhead cabinetry	Polytec Black (Woodmatt Finish)
Base cabinetry	Polytec Classic White Matt (Melamine Matt Finish)
Cabinetry profile	Square Edge
Splashback	White Wave Matt 67mm x 280mm - Mirrored Glass Splashback

### Living

Carpet	Carpetcall – Wool. Ambur Category. Earl Grey
Floor Tiles	Art Rock Grigio Lappato 300×600mm

### Ensuite

Benchtop	Caesarstone Empira White 5151
Base Cabinetry	Polytec Black (Woodmatt Finish)
Cabinetry profile	Square Edge
Main tile	Art Rock Anthracite Lappato - 300×600mm

### Main Bathroom

Benchtop	Caesarstone Raw Concrete
Base cabinetry	Classic White Matt finish (Melamine Matt finish)
Cabinetry profile	Square Edge
Main wall tile	Art Rock Grigio Lappati 300×600mm

### Exterior

Brick	Austral Industrial Steel (Natural Grey Mortar)
-------	------------------------------------------------

