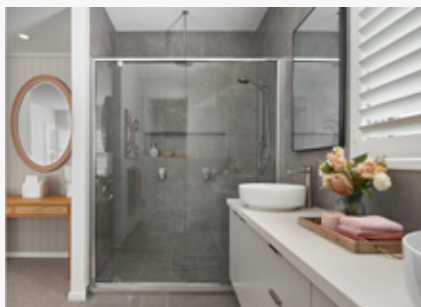


ON DISPLAY

# Barcelona 27



## Fresh, Refined & Organic

Inspired by the coastal accents of the Cape façade, the functional 27 square floorplan feels relaxed with an added element of sophistication. Coupling an eye-catching raked ceiling in the living and dining with a stunning, entertainers kitchen, the home features cosy and warm furnishings to soften the modern scheme with a Bohemian twist

**WINDERMERE**  
MAMBOURIN

On display at Windermere Estate, 2 Yang Road, Mambourin.

# Barcelona 27 Cape facade.

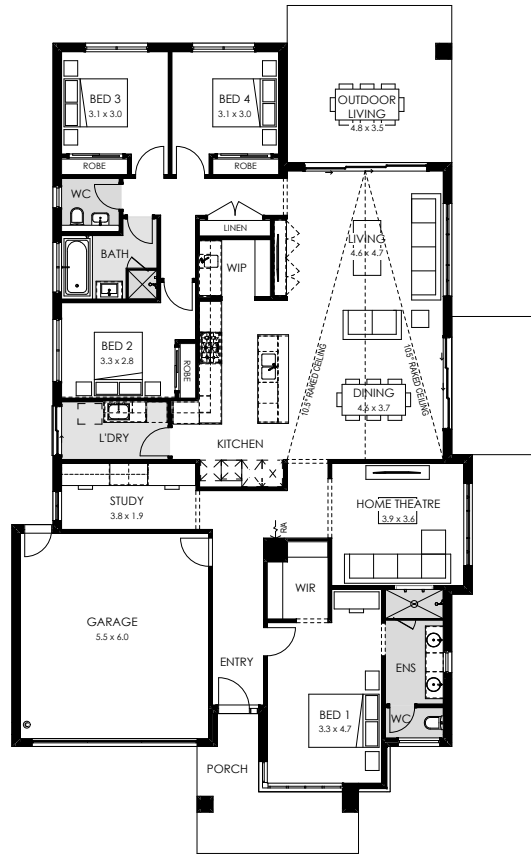
## Home specifications.

Total area	258.98 m <sup>2</sup>
Width	13.43m
Length	22.43m
Fits lot width	14m



## Home design specifications.

- Architectural Cape façade
- 10.5 degree raked ceiling
- 2740mm high ceiling throughout home
- Butler's Pantry with cabinetry
- 3000mm high ceilings to Entry
- Square set cornice to home theatre and entry
- Suite of ILVE products, including microwave, cooktop, dishwasher, steam oven and integrated freezer unit



## Home style specifications.

### Kitchen

Benchtop	Caesarstone Sleek Concrete
Overhead cabinetry	Polytec Thermo Manchester EMO (Thermo Finish)
Base cabinetry	Polytec Oyster Grey Matt (Thermo Finish)
Cabinetry profile	Thermo Manchester EMO
Splashback	Edge White Wavy Matt 68 x 280mm

### Living

Carpet	Ambur 47/862 Earl Grey
Flooring	Quanta Oyster Soft Lappato 300 x 600mm
Paint	Dulux Vintage Linen

### Ensuite

Benchtop	Caesarstone Fresh Concrete
Overhead cabinetry	Polytec Empire Oak Woodmatt (Melamine Matt finish)
Base cabinetry	Polytec Thermo Manchester EMO (Thermo finish)
Cabinetry profile	Thermo Manchester EMO
Main wall tile	Quanta Shale Soft Lappato 300 x 600mm

### Main Bathroom

Benchtop	Caesarstone Fresh Concrete
Base cabinetry	Polytec Tessuto Milan (Ravine Finish)
Cabinetry	Profile Square Edge
Main Tile	EDGE Light Grey Wavy Matt. 68 x 280mm

### Exterior

Main brick	Industrial Alloy
------------	------------------