

ON DISPLAY

# Barcelona 27



## Light-filled, country luxe

The home is built to accommodate younger families, with the minor bedrooms located toward the back of the house, close to the main bathroom. The beautiful master suite towards the front of the home gives the adults their own private oasis, boasting a large WIR, make-up nook and double vanity.

MINTA

On display at Minta Estate, 22 Soho Boulevard, Berwick.

# Barcelona 27

## Provincial facade.

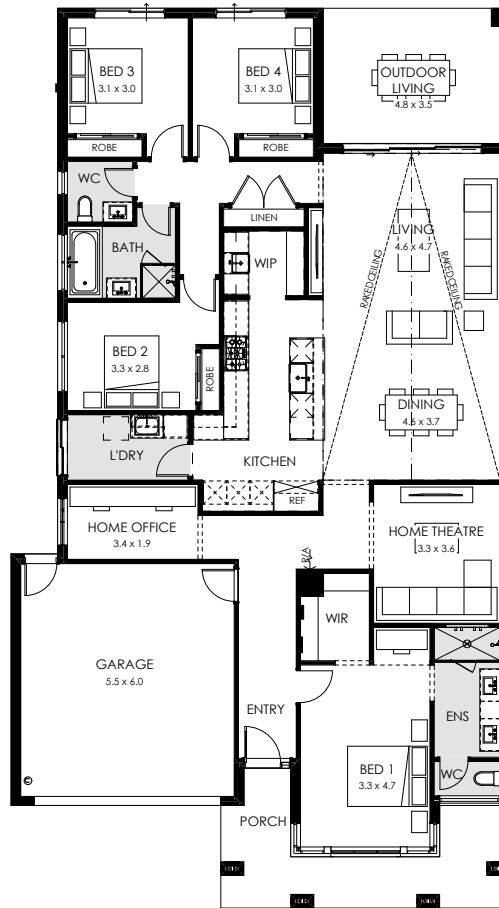
### Home specifications.

Total area	265.90m <sup>2</sup>
Width	12.83m
Length	23.15m
Fits lot width	14m



### Home design specifications.

- Architectural Provincial facade
- Raked ceiling in living and dining area
- LED downlights throughout home
- Stained timber windows to facade
- 2740mm high ceilings throughout home
- Suite of ILVE appliances, including integrated dishwasher, rangehood and built-in microwave



### Home style specifications.

#### Kitchen

Benchtop	Caesarstone Primordia 4043
Overhead cabinetry	Polytec Prime Oak Woodmatt (Melamine Matt finish)
Base cabinetry	Class White (Thermo Matt finish)
Cabinetry profile	Square Edge

#### Living

Carpet	Cat. 7 Call Wool, Ambur. Colour: 48/8621 Twilight
Flooring	Cat. 1 Brooklyn Mapleton
Paint	Dulux White Mystery SN4D1

#### Ensuite

Benchtop	Caesarstone Fresh Concrete 4001
Base cabinetry	Polytec Prime Oak Woodmatt (Melamine Matt finish)
Cabinetry profile	Square Edge
Main wall tile	NCIFK2111 Olympia Grey Matt 300x600mm

#### Main Bathroom

Benchtop	Caesarstone Sleek Concrete 4003
Base cabinetry	Polytec Prime Oak Woodmatt (Melamine Matt finish)
Cabinetry profile	Square Edge
Main tile	TAKWB0401 White Satin 75x300mm

#### Exterior

Brick	Cat. 5 Industrial Steel (Natural Grey Mortar)
-------	---