

ON DISPLAY

Riviera 32



Classic country coastal

Adding country flare to a classic coastal interior style, this 32 square floorplan welcomes you home to a generous suite of entertaining spaces, an elegant outdoor space and eye-catching master suite. Coupling natural timber finishes with pops of teal and cream bring this style to life.

On display at Coridale Estate, 9 Coridale Boulevard, Lara.

Riviera 32 Cape facade.

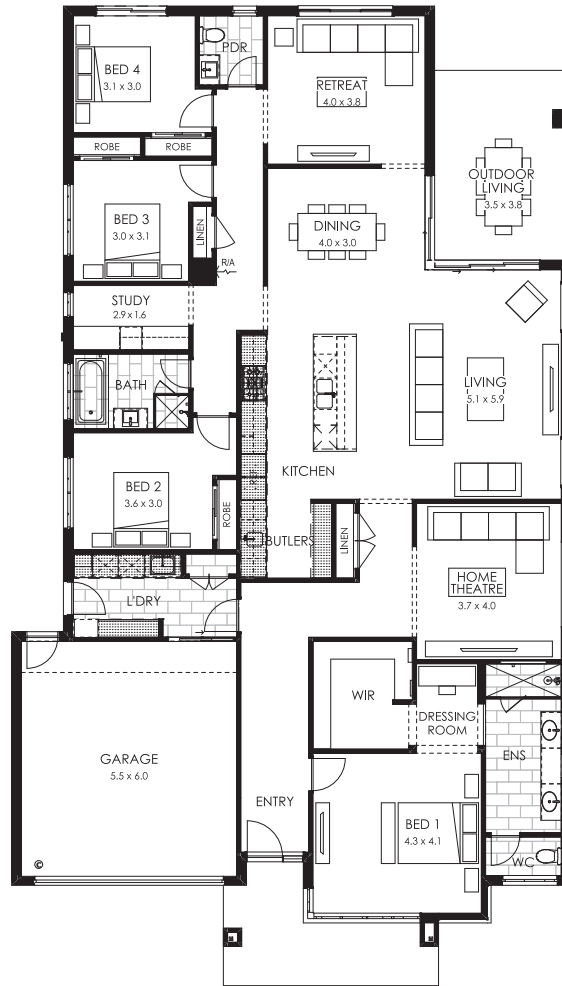
Home specifications.

Total area	299.67m ²
Width	14.32m
Length	25m
Fits lot width	16m



Home design specifications.

- Designer Cape façade
- 60mm Caesarstone benchtop to kitchen
- Suite of ILVE kitchen appliances
- Gourmet butlers pantry with 60mm Caesarstone and melamine shelves
- Mosaic wall feature tile to ensuite
- Double glazed aluminium cornerless recessed stacking/sliding door
- Stunning interior colour scheme selected by our Senior Interior Designer



Home style specifications.

Kitchen

Benchtop	Caesarstone Pure White
Overhead cabinetry	Polytec Boston Oak (Woodmatt finish)
Base cabinetry	Polytec Agave (Melamine Smooth finish)
Cabinetry profile	Square edge
Splashback	Selkis Steel 75 x 300mm

Living

Carpet	Waratah Colour 91 Morning Shadows
Flooring	Laminate - Typhoon Riviera Saint Tropez
Feature paint	Dulux Wistow

Main Bathroom

Benchtop	Caesarstone Pure White
Base cabinetry	Polytec Boston Oak (Woodmatt finish)
Cabinetry profile	Square Edge
Main wall tile	Enzo Micro-Tech Cinder Matt 300x600

Ensuite

Benchtop	Caesarstone Pure White
Base cabinetry	Polytec Boston Oak (Woodmatt finish)
Cabinetry profile	Square Edge
Feature tile	Enzo Micro-Tech Cinder Matt 300x600
Main tile	Fan Concave Green Gloss 89x94

Exterior

Brick	Austral Industrial Alloy (Natural Grey mortar)
-------	--