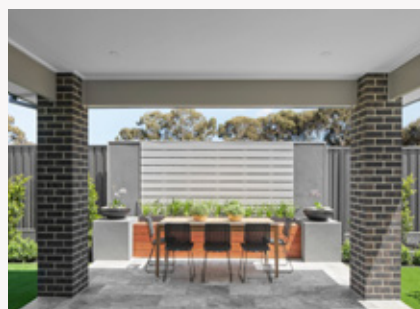
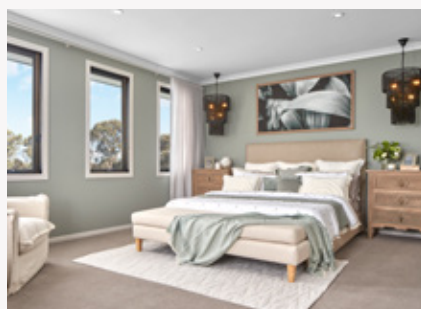


ON DISPLAY

Ascot 36



Modern, Moody & Mature

Strong, architectural design meets an earthy colour palette and functional floorplan in this spacious two-storey, five-bedroom space – perfect for multi-generational or growing families. The interior carries through the facade features and continues the darker colour palette with timber accents throughout.

Cloverton

On display at Cloverton Estate, 21 Design Way, Kalkallo

Ascot 36 Newtown facade.

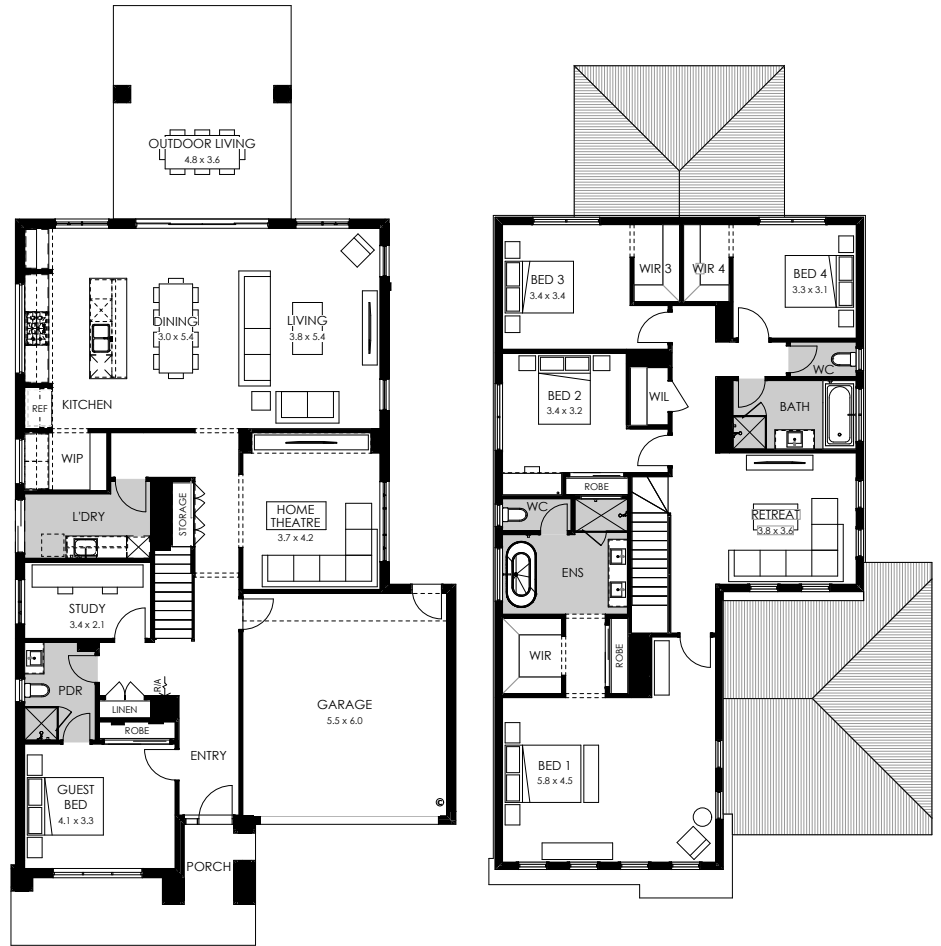
Home specifications.

Total area	351.89 m ²
Width	11.99
Length	22.07
Fits lot width	14m



Home design specifications.

- Architectural Newtown façade
- 2550mm high ceilings to ground floor & 2340mm high internal doors
- Victorian Ash timber staircase with glass balustrade
- Square set cornice to entry, living, kitchen & dining
- 1000mm deep Caesarstone kitchen benchtop
- Gourmet butlers pantry
- Outdoor living area



Ground floor

First floor

Home style specifications.

Kitchen

Benchtop	Caesarstone Noble Grey 5211
Overhead cabinetry	Polytec Antico Oak Woodmatt (Melamine Matt Finish)
Base cabinetry	Polytec Stone Grey (Melamine Matt Finish)
Splashback	Estudio Block Reminiscent Grey Matt - 50 x250mm

Living

Flooring	Newtown Laminate Flooring
Carpet	Frontline / Universe colour Celeste
Paint	Dulux Grey Pebble P14B1

Ensuite

Benchtop	Caesarstone Fresh Concrete
Cabinetry	Polytec Antico Oak Woodmatt (Melamine Matt Finish)
Wall tile	Cement Grey Matt. 450 × 450mm

Bathroom

Benchtop	Caesarstone Fresh Concrete
Cabinetry	Polytec Stone Grey (Melamine Matt finish)
Wall tile	Cement White Matt. 450 × 450mm

Exterior

Brick	Austral Melbourne Black Rock (Natural Grey mortar)
-------	--