

ON DISPLAY

Oslo 29



Moody, Architectural & Modern

Inspired by the edgy and architectural Flinders façade, the functional 29 square floorplan exudes moody sophistication with rich grey-green accents throughout. Carrying the architecture all the way through the home, the raked ceiling helps to elevate the interior. cladding, feature black fixtures and fittings and a natural mix of dark and light timbers.

AURORA®

On display at Aurora Estate, 14 Gem Parade, Wollert.

Oslo 29

Flinders facade.

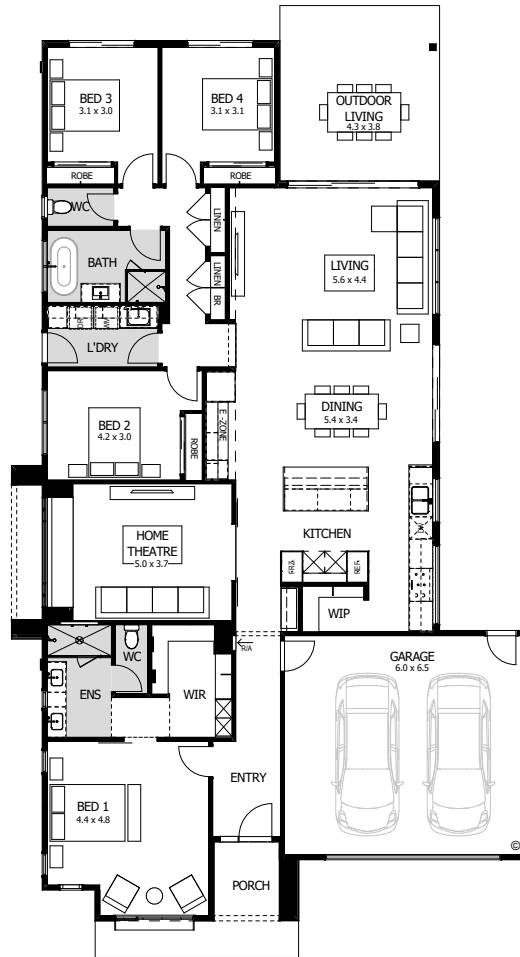
Home specifications.

Total area	269.47 m ²
Width	14.09m
Length	24.06m
Fits lot width	14m



Home design specifications.

- Architectural Flinders façade
- 2740mm high ceilings throughout the home
- 15 degree raked ceiling in living and dining area
- Entertainers kitchen with floor to ceiling cabinetry, walk-in pantry, window splashback and waterfalls edges to Caesarstone benchtop
- Raked ceiling and window seat to home theatre
- Suite of integrated ILVE appliances, including induction cooktop, microwave and steam oven, dishwasher and rangehood



Home style specifications.

Kitchen

Benchtop	Caesarstone Turbine Grey
Overhead cabinetry	Polytec Oasis (Melamine Matt finish)
Base Cabinetry	Polytec Ferro (Melamine Matt finish)
Splashback	Edge White Wave. 68 x 280mm

Living

Carpet	Waratah, Baron Creek, colour 91 Morning Shadows.
Flooring	Antique Rocky Oak 8% Matte 2130x240x14.2.
Paint	Dulux Whisper White SW1C2

Ensuite

Benchtop	Caesarstone Turbine Grey
Base cabinetry	Polytec Oasis (Melamine Matt finish)
Main wall tile	Edge White Wave. 68 x 280mm

Main Bathroom

Benchtop	Caesarstone Fresh Concrete
Base cabinetry	Polytec Plantation Ash Woodmatt (Melamine Matt finish)
Main wall tile	Edge White Wave. 68 x 280mm

Exterior

Cladding	Axon Cladding 133 Smooth over 35mm Cavity Battens & Axon Cladding 400 Smooth over 35mm Cavity Battens
Cladding Colour	Dulux Monument