

QUALITY DISPLAY HOMES FOR SALE

# Your Dream Home with 7%\* Guaranteed Return.



**You could earn positive income with a hassle-free investment.**

With flexible finance options available, let our in-house finance specialists help you choose the home loan that's right for you from some of Australia's leading lenders.

**Parkville 31 Arc facade**

Mt Atkinson Estate

Available for	\$1,179,900
Annual earnings	\$82,593*

\*Terms & Conditions apply. Annual earnings based only on a leaseback of 7% and does not factor in any mortgage repayments, interest rates, insurance, rates and service charges or body corporate fees. Earnings figure based on 7% of advertised purchase price from \$1,179,900 for Boutique Homes Parkville 31 at Mt. Atkinson Estate in Truganina, Victoria. All pricing is inclusive of GST. Image used is for illustrative purposes only and may show decorative items not included in the purchase. Block and building dimensions may vary from the illustration and the details shown. For more information on the pricing and specification of this home please contact a New Homes Consultant. The building practitioner is ABN Group (Vic) Pty Ltd trading as Boutique Homes, registration number CDB-U 49215. ABN Group Victoria has permission of the owner of the land to advertise the land as part of the price specified. Correct as of 2 November 2023.

# Parkville 31

## Arc facade.

### Address

Mt Atkinson Estate  
Lot 8012, Sierra Street, Truganina

### Specifications

Home area 306.20 m<sup>2</sup>

Land size 448m<sup>2</sup>

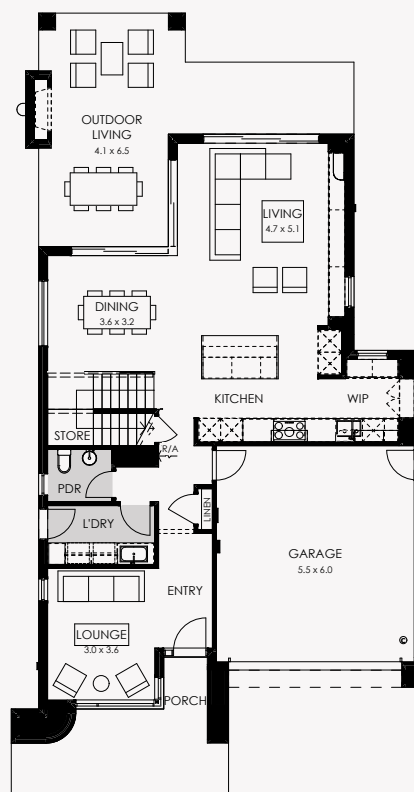


The Parkville 31 features a huge range of luxury upgrades and inclusions:

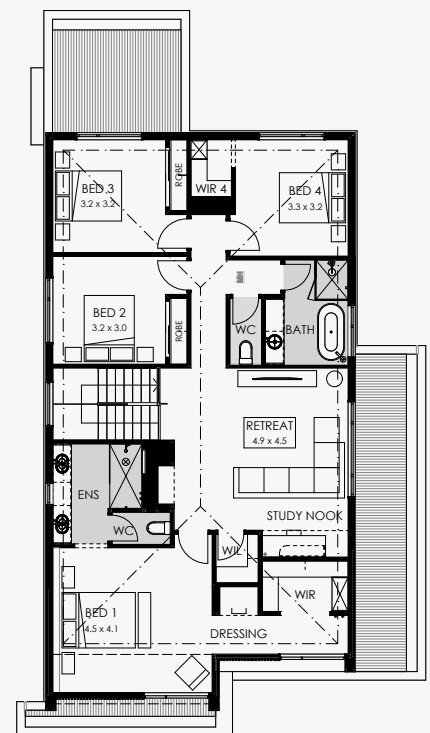
- Architectural Arc façade
- 2740mm ceiling height to the ground floor and 2590mm to the first floor
- Caesarstone benchtops to the kitchen, ensuite, bathroom and laundry
- Butler's Pantry with cabinetry
- ILVE suite of cooking appliances
- Full width Outdoor living space with fireplace
- Designer double shower to ensuite
- Free standing bath to main bathroom
- Stunning interior colour scheme selected by our Senior Interior Designer
- Professional landscaping and fencing

Smart living just got a whole lot smarter with the Parkville – a clever home floorplan, designed to delight.

The Parkville features four bedrooms and three versatile living areas throughout – offering a variety of spaces to entertain or relax. The open plan downstairs creates an airy environment where the whole family can come together and enjoy distinct spaces that still feel harmoniously connected. The open living extends out to an outdoor living space that beckons BBQs and gatherings with friends and family.



Ground Floor



First Floor

Discover the difference  
[BoutiqueHomes.com.au](http://BoutiqueHomes.com.au)  
or call 9674 4500

**boutique**  
homes

**resolve**  
finance

**MT. ATKINSON**

\*Terms & Conditions apply. Annual earnings based only on a leaseback of 7% and does not factor in any mortgage repayments, interest rates, insurance, rates and service charges or body corporate fees. Earnings figure based on 7% of advertised purchase price from \$1,179,900 for Boutique Homes Parkville 31 at Mt. Atkinson Estate in Truganina, Victoria. All pricing is inclusive of GST. Image used is for illustrative purposes only and may show decorative items not included in the purchase. Block and building dimensions may vary from the illustration and the details shown. For more information on the pricing and specification of this home please contact a New Homes Consultant. The building practitioner is ABN Group (Vic) Pty Ltd trading as Boutique Homes, registration number CDB-U 49215. ABN Group Victoria has permission of the owner of the land to advertise the land as part of the price specified. Correct as of 2 November 2023.