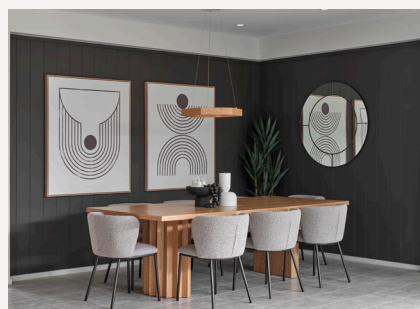


ON DISPLAY

# Marseille 32



## Refined-retro with a modern twist

Simple, yet timeless. The Marseille 32 in Redstone Estate embodies the retro influence of the 60s and 70s through curved lines, tan-timber cabinetry and pops of caramel and dusty pink. You'll also notice the subtle addition of a modern interior style through pops of black in the kitchen cabinetry, feature VJ panelling and soft furnishings.

**Redstone.**

On display at Redstone Estate, 4 Wanderer Road, Sunbury.

## Home style specifications.

Kitchen	
Benchtop	Caesarstone Fresh Concrete
Overhead cabinetry	Polytec Boston Oak (Woodmatt finish)
Base cabinetry	Polytec Cinder (Venette finish)
Splashback	Caesarstone Fresh Concrete
Tapware	Vivid Slimline - Sink Mixer Gooseneck - Gun Metal
Living	
Floor tiles	Terracrete Greige Soft Lappato
Carpets	Baron Creek - 93 Stony Block
Paint	Dulux Hardened Steel SG6H8
Ensuite	
Benchtop	Caesarstone Fresh Concrete
Base cabinetry	Polytec Boston Oak (Woodmatt finish)
Feature tiles	Herringbone Honed Mosaic - Petra Grey
Wall tiles	Terracrete Greige Soft Lappato
Tapware	Liano II - Rounded Cover Plate - Gunmetal

Main Bathroom	
Benchtop	Caesarstone Fresh Concrete
Base cabinetry	Polytec Boston Oak (Woodmatt finish)
Main tiles	Terracrete Greige Soft Lappato
Feature tiles	Subway Touch - White Matt
Home Office	
Open-shelving	Polytec Boston Oak (Woodmatt finish)
Base cabinetry	Polytec Cinder (Venette finish)
Exterior	
Brick	Austral Melbourne - Black Rock (Natural Grey mortar)
Render	Dulux Raku
Driveway	Boral Daybreak

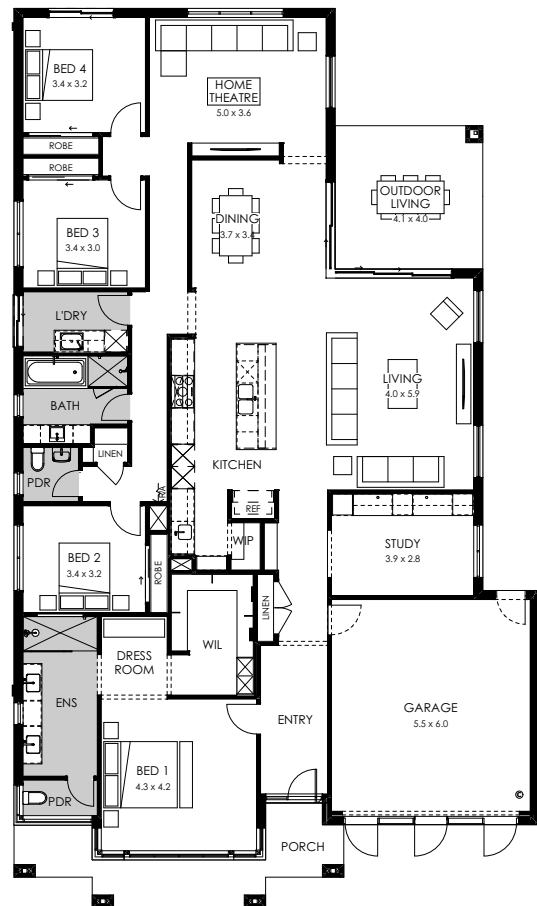
## Home specifications.

Total area	297.14m <sup>2</sup> / 31.98sq
Width	14.51m
Length	24.11m
Fits lot width	16m



## As displayed upgrades.

- Architectural Provincial facade
- 2740mm high ceilings throughout
- Suite of ILVE appliances in kitchen
- Frameless shower glass to master ensuite
- Full height, herringbone tiles to master ensuite
- Stained timber windows to facade
- Double glazed aluminium recessed cornerless stacking doors
- Woodmatt melamine robe fit out
- Mosaic feature wall tiling to ensuite and main bathroom
- Category five floor tiles to living area



## Discover the difference BoutiqueHomes.com.au

Disclaimer ©2022, all plans are protected by copyright and are owned by ABN Group (VIC) Pty Ltd. Plans are based on a modern facade. Images used in this brochure are for illustrative purposes only and may depict fixtures, finishes, features, furnishings and landscaping not included in standard pricing or supplied by Boutique Homes including, but not limited to, flooring, overhead cabinetry, 900mm wide appliances, 2550mm high ceilings, planter boxes and fences. For more information on the pricing and specification of these homes please contact one of our New Homes Consultants. Boutique Homes may at its direction determine how long it wants to offer the products and pricing set out in this brochure. Boutique Homes is entitled to vary all its products and pricing at its discretion at any time. See boutiquehomes.com.au for further details. All information contained within this brochure was accurate at time of printing on June 2022. BH0065