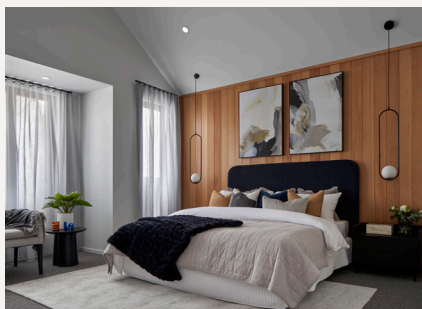


ON DISPLAY

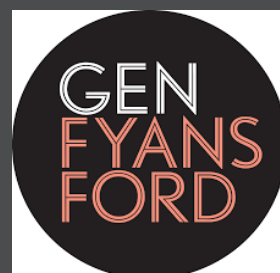
Marseille 32



Minimal, modern & monochromatic

Inspired by the dark cladding and sleek lines of the Flinders façade, the 32 square abode follows suit with a sophisticated and modern interior scheme. Adding a splash of blue and rusty brown to the mostly monochromatic colour palette brings this contemporary design to life, adding expressive stones, clean geometric shapes and oversized, modern abstract artwork to bring character to the space.

On display at Gen Fyansford Estate, 7 Dell Boulevard, Fyansford.



Home style specifications.

Kitchen	
Benchtop	Caesarstone Piatra Grey
Overhead cabinetry	Polytec Oyster Grey (Thermo Solid Range Matt finish)
Base cabinetry	Polytec Oyster Grey (Thermo Solid Range Matt finish)
Cabinetry profile	Manchester Style 1 - Minimal Profile EM0
Splashback	Caesarstone Piatra Grey
Living	
Carpet	Baron Creek - 92 Cracked Pepper
Paint	Dulux White Mystery
Feature timber	Integrated Natural Stain - Natural/Clear 3 Coats
Ensuite	
Benchtop	Caesarstone Piatra Grey
Base cabinetry	Polytec Canterbury Grey (Thermo Solid Range Matt finish)
Cabinetry profile	Manchester Style 1 - Minimal Profile EM0
Wall tile	York Slim Super White Matt 65 x 396
Floor tiles	Quanta Shale Soft Lappato 300 x 600

Main Bathroom	
Benchtop	Caesarstone Cloudburst Concrete
Base cabinetry	Polytec Oyster Grey (Thermo Solid Range Matt finish)
Cabinetry profile	Manchester Style 1 - Minimal Profile EM0
Main tiles	Quanta Shale Soft Lappato 300 x 600
Feature tiles	Streamline Mosaic Dark Grey Matt 28 x 295
Home Office	
Cabinetry	Polytec Arcadia Oak (Woodmatt finish)
Cabinetry profile	40mm Square Edge
Exterior	
Brick	Austral Industrial Char (Natural grey mortar)
Cladding	James Hardie - Axon 130 Smooth - Vertical

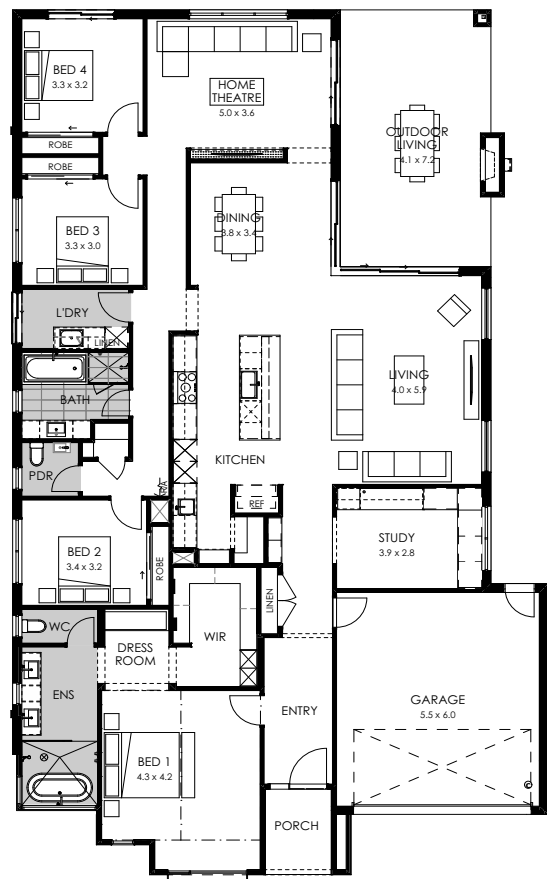
Home specifications.

Total area	297.14m ²
Width	14.51m
Length	24.11m
Fits lot width	16m



As displayed upgrades.

- Architectural Flinders facade
- Jetmaster fireplace in extended outdoor living
- Suite of ILVE appliances in kitchen
- 34 degree raked ceiling to master bedroom
- Hemlock timber cladding to dining and master
- Study fit-out with corner window seat and open shelving
- Double glazed aluminium recessed cornerless stacking doors
- 2740mm high ceilings throughout the home
- Basketball court and professional landscaping to the rear



Discover the difference BoutiqueHomes.com.au

Disclaimer ©2022, all plans are protected by copyright and are owned by ABN Group (VIC) Pty Ltd. Plans are based on a modern facade. Images used in this brochure are for illustrative purposes only and may depict fixtures, finishes, features, furnishings and landscaping not included in standard pricing or supplied by Boutique Homes including, but not limited to, flooring, overhead cabinetry, 900mm wide appliances, 2550mm high ceilings, planter boxes and fences. For more information on the pricing and specification of these homes please contact one of our New Homes Consultants. Boutique Homes may at its discretion determine how long it wants to offer the products and pricing set out in this brochure. Boutique Homes is entitled to vary all its products and pricing at its discretion at any time. See boutiquehomes.com.au for further details. All information contained within this brochure was accurate at time of printing on June 2022. BH0065