

# Madison

Available sizes: 27 / 24 / 23

The open space and flow of the Madison floorplan creates an idyllic home for all to love. With plenty of room for entertaining, the open-plan layout allows light to flow through at every opportunity. Positioned near the entry is the main bedroom which evokes a tranquil retreat separated from the remainder of the home.

Designed for 14m 12.5m blocks



# Madison 27



Fits lot width 14m

Fits lot length 30m

## Specifications

Total area 254.81m<sup>2</sup> / 27.43sq

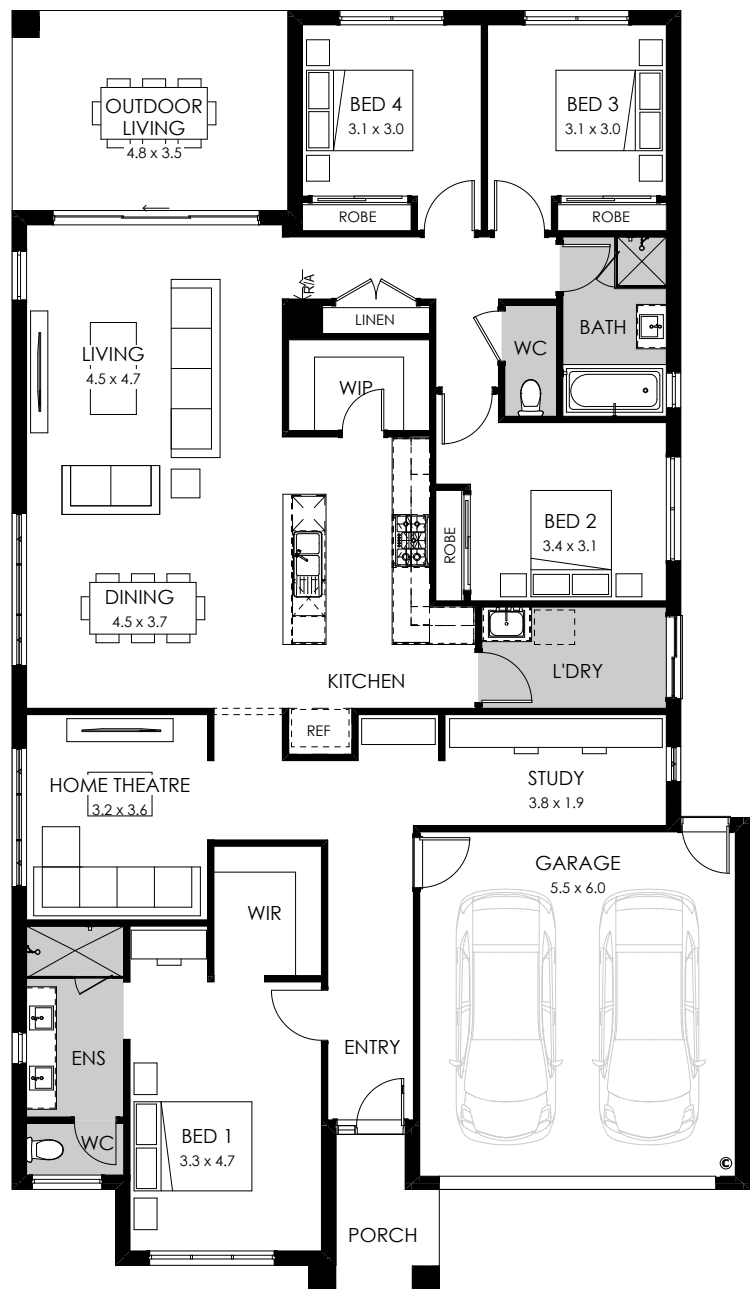
Width 12.83m

Length 22.31m



## Design options available

- Butler's pantry
- Rear flip
- Workshop



## Facade options available

Modern, Metro, Viva, Contempo, Luxe, Cape, Vogue

# Madison 24

Fits lot width 12.5m

Fits lot length 30m



## Specifications

Total area 222.55m<sup>2</sup> / 23.95sq

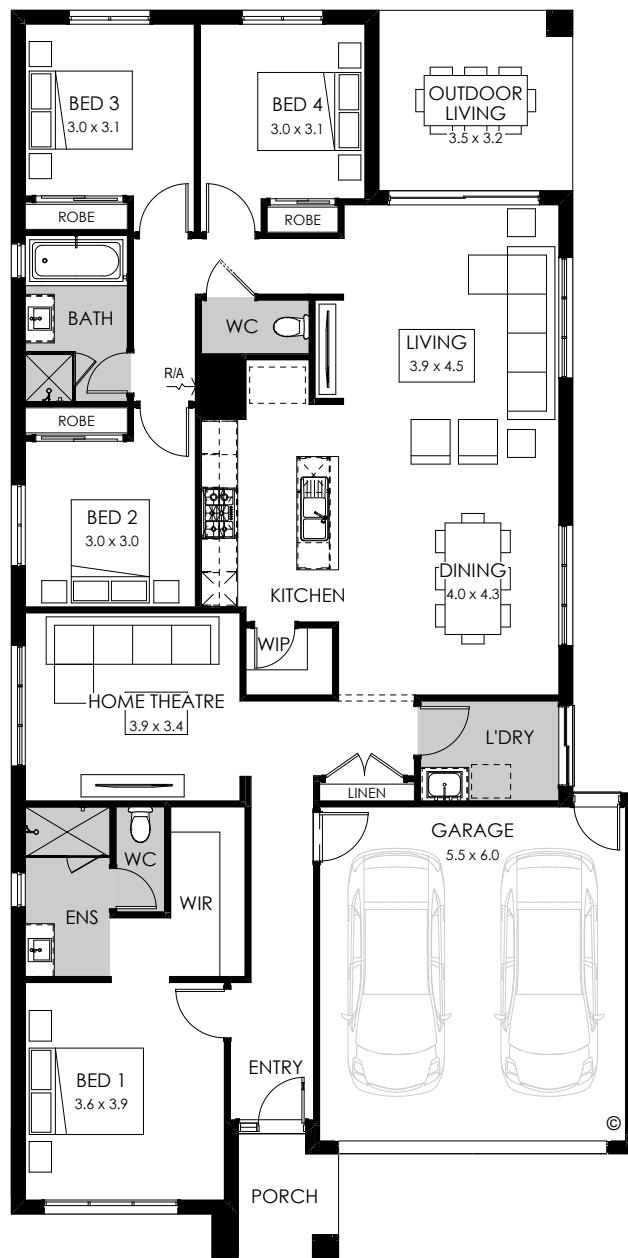
Width 11.27m

Length 22.43m



## Design options available

- Powder room
- Ensuite upgrade



## Facade options available

Modern, Metro, Viva, Contempo, Luxe, Cape, Vogue