

Seville

Available sizes: 28 / 25

Elegantly and intuitively designed, the Seville features a separate front lounge offering a peaceful oasis away from the main open-plan living space.

Designed for 14m blocks



Seville 28



Fits lot width 14m

Fits lot length 32m

Specifications

Total area 262.98m² / 28.30sq

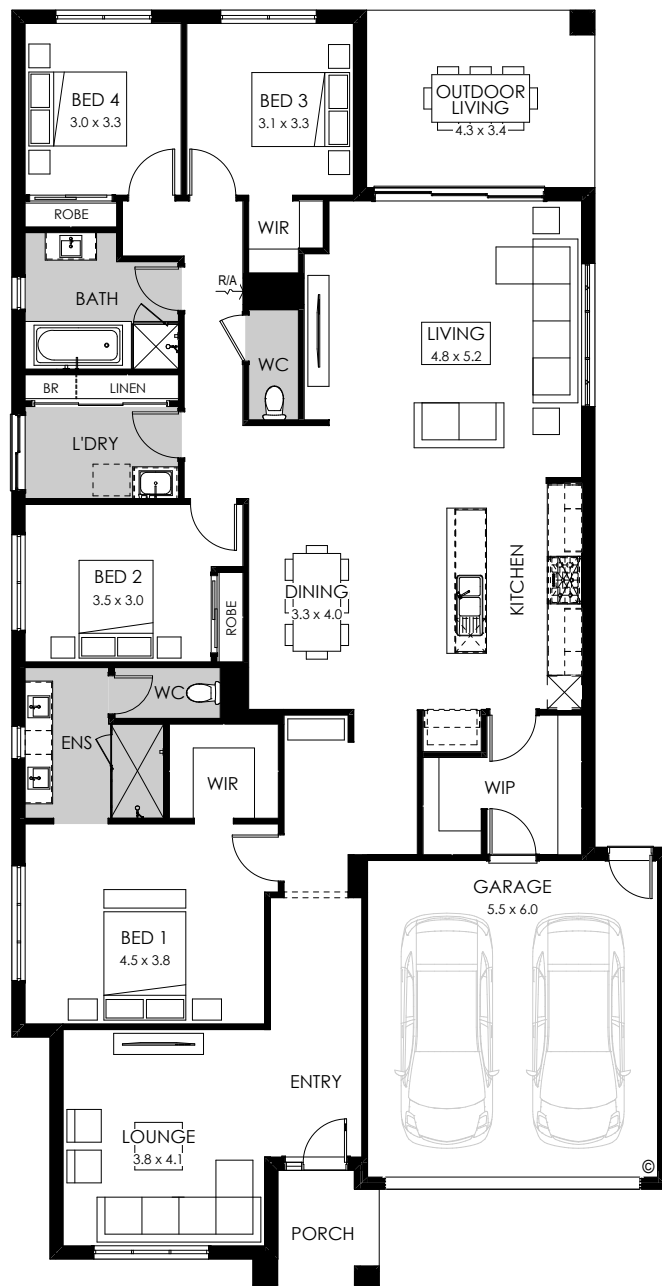
Width 12.47m

Length 24.23m

 4  2  2

Design options available

- 5th bedroom
- Alternate kitchen
- Bath to ensuite
- Butler's pantry
- 3 bedrooms
- Additional ensuite
- Powder room
- Rear flip



Facade options available

Modern, Metro, Viva, Contempo, Vogue, Luxe, Tribeca, Cape, Gallerie, Coast, Provincial, Southampton, Flinders, Mason, Arlo

Seville 25



Fits lot width 14m

Fits lot length 28m

Specifications

Total area 232.28m² / 25.02sq

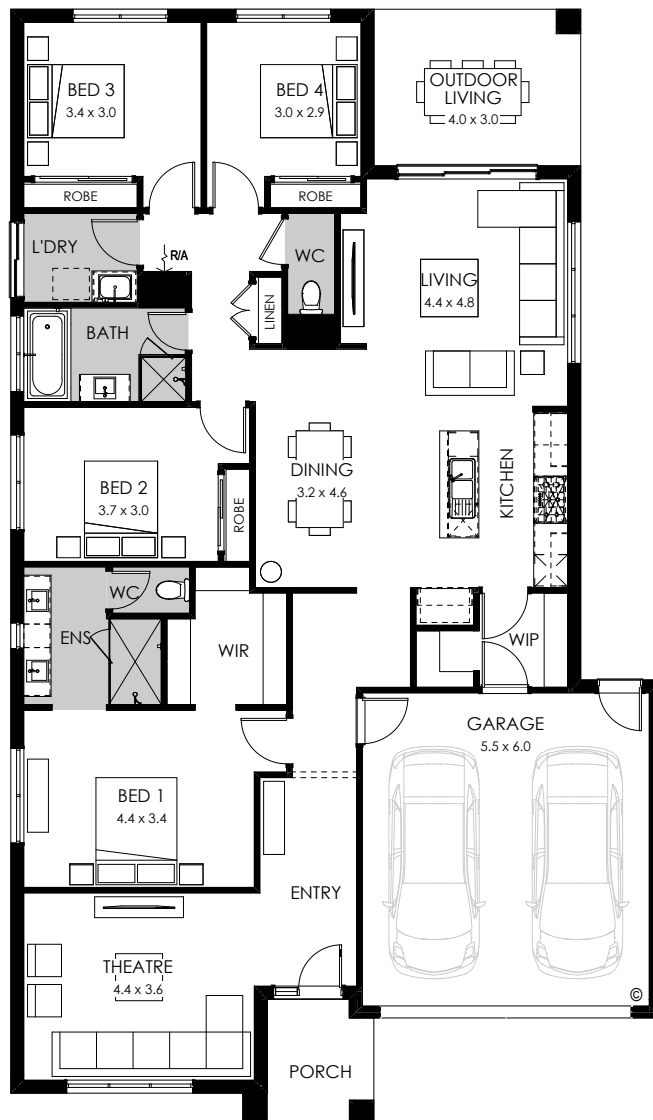
Width 12.47m

Length 21.35m

4 2 2

Design options available

- Alternate kitchen
- Bath to ensuite
- Butler's pantry
- Alternate ensuite
- 3 bedrooms
- Alternate bed 1
- Powder room
- Rear flip



Facade options available

Modern, Metro, Viva, Contempo, Vogue, Luxe, Tribeca, Cape, Gallerie, Coast, Provincial, Southampton, Flinders, Mason, Arlo

